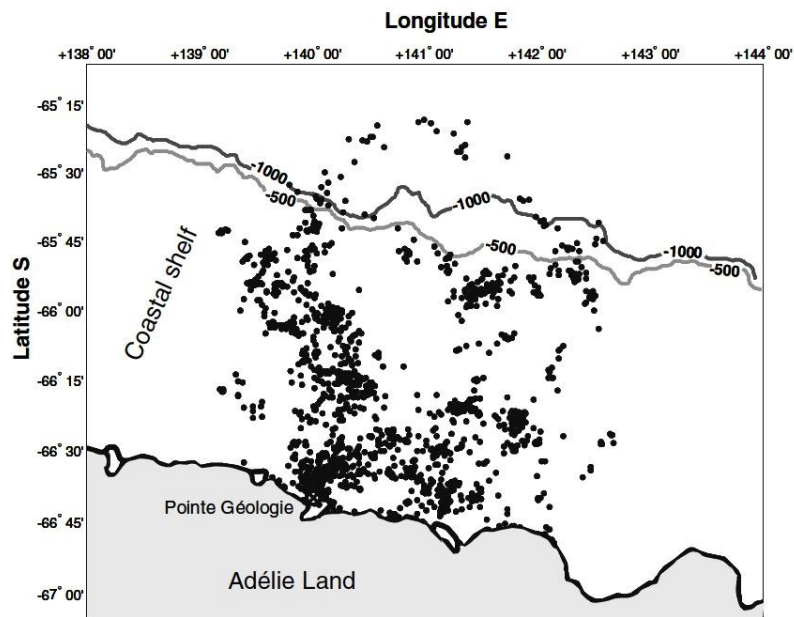


Is the climate homogenous at IPCC class models resolution?

Evaluation of the spatial resolution of IPCC class models

Breeding

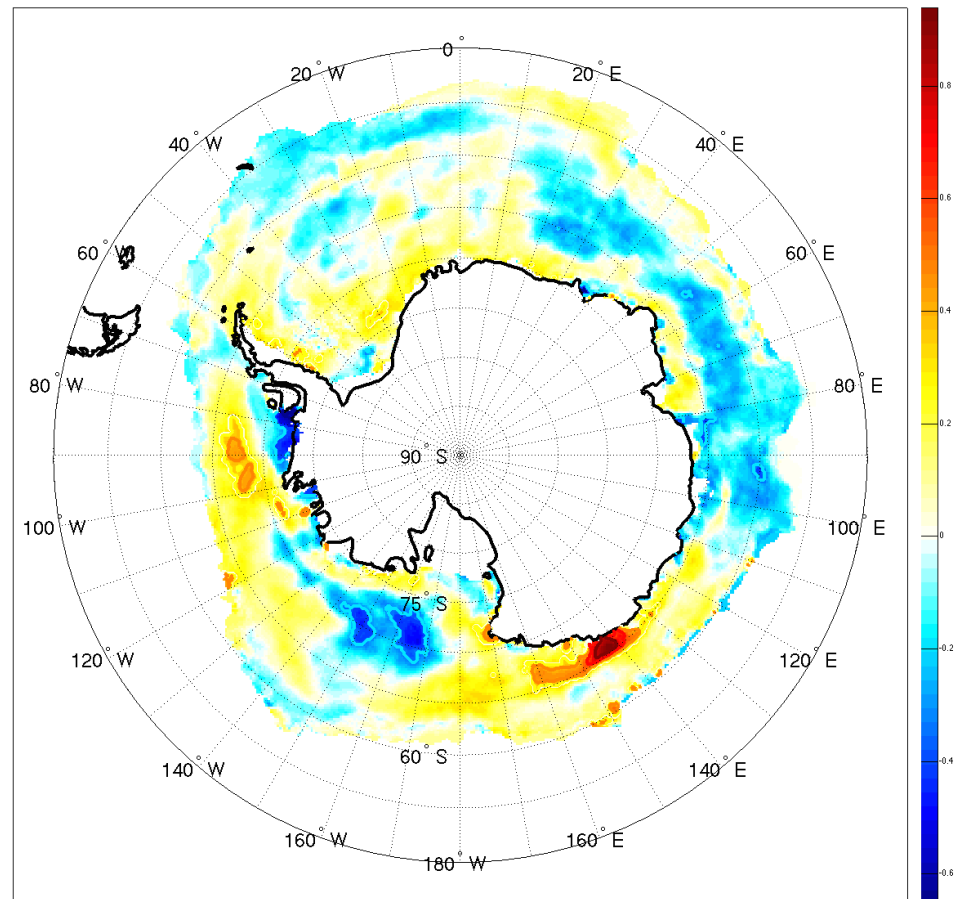
Longitude: 139 - 143



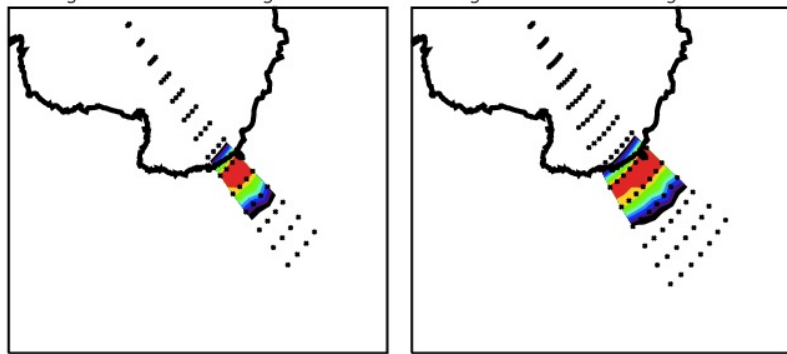
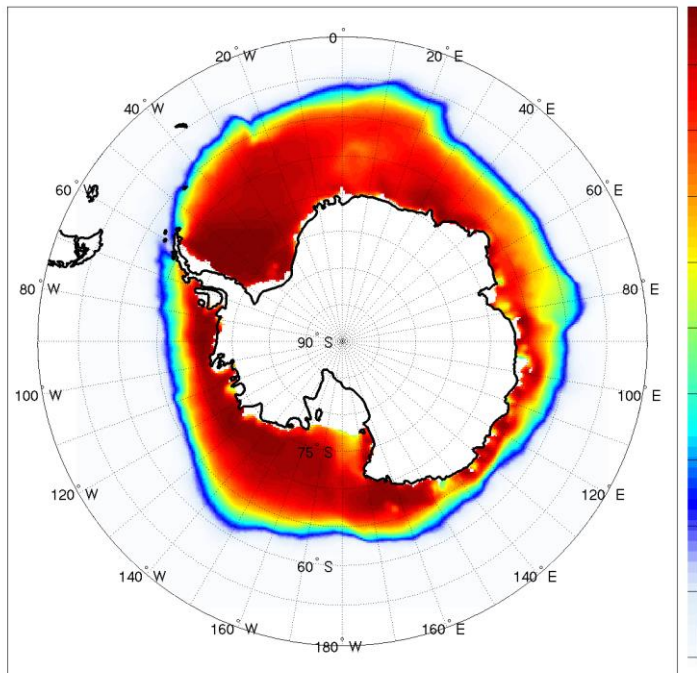
Evaluation of the spatial resolution of IPCC class models

Breeding: 139 – 143 / Sector 130-150

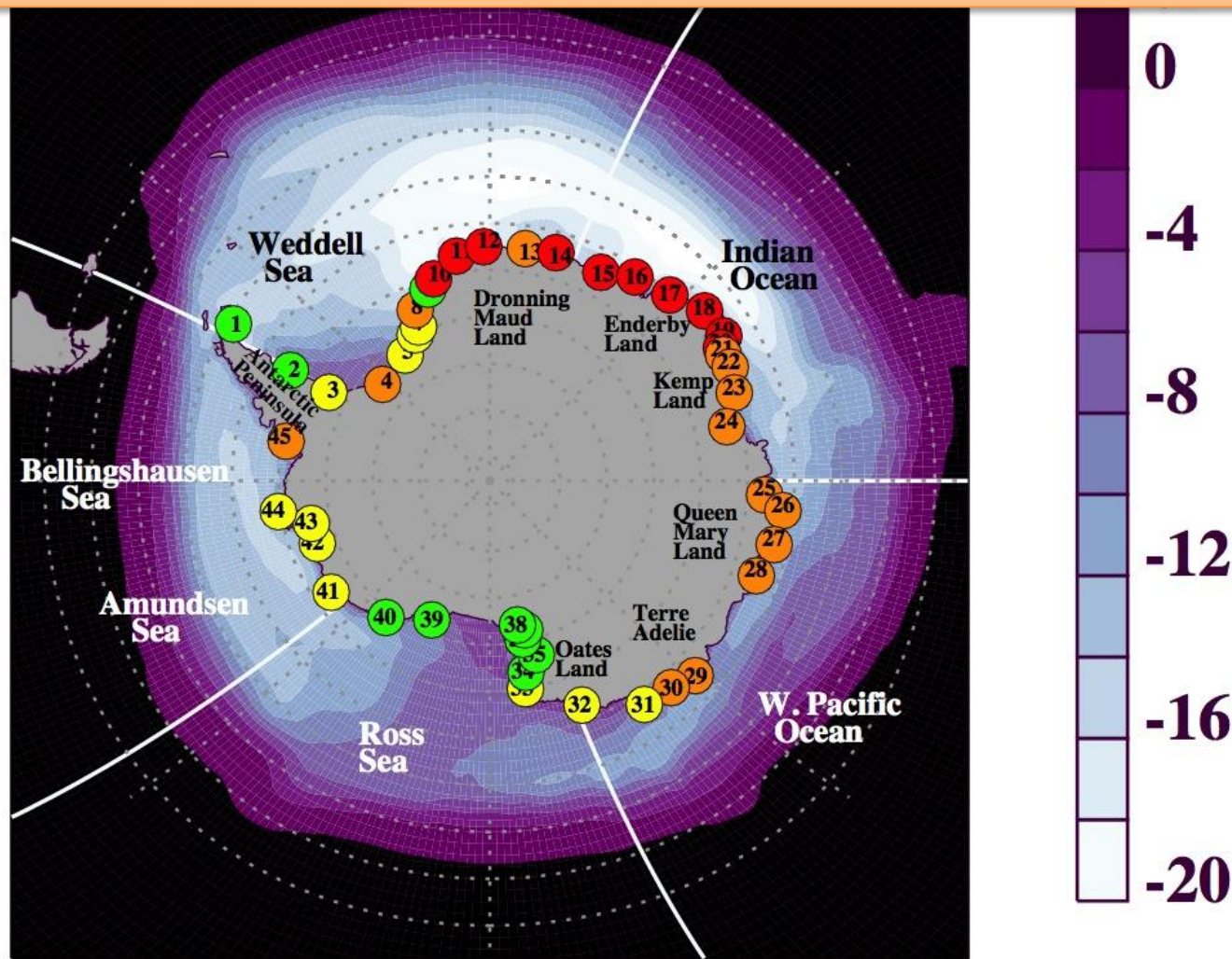
Correlation




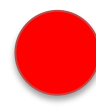


Mean Sea ice concentration 1979-2012



Local selection procedure:
2/3 colonies are endangered
All colonies are declining by 2100



-  Decline < 30%
-  Vulnerable decline > 30%
-  Endangered decline > 50%
-  Quasi-extinct decline > 90%